



EAST COAST

METAL SYSTEMS

PRODUCT DATA

ECMS EC-100 SYSTEM

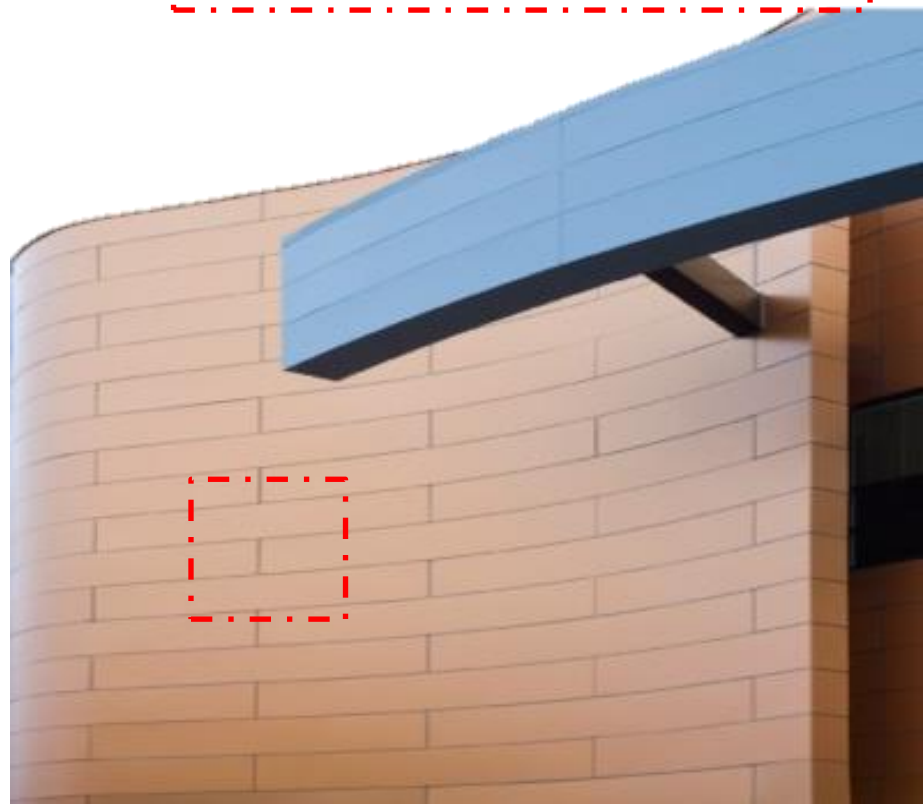
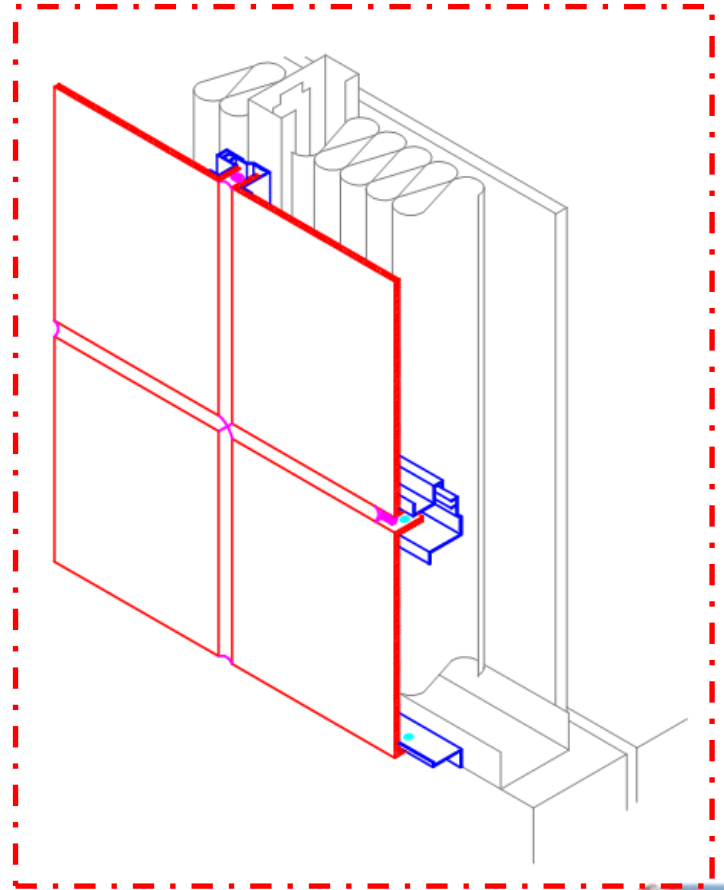
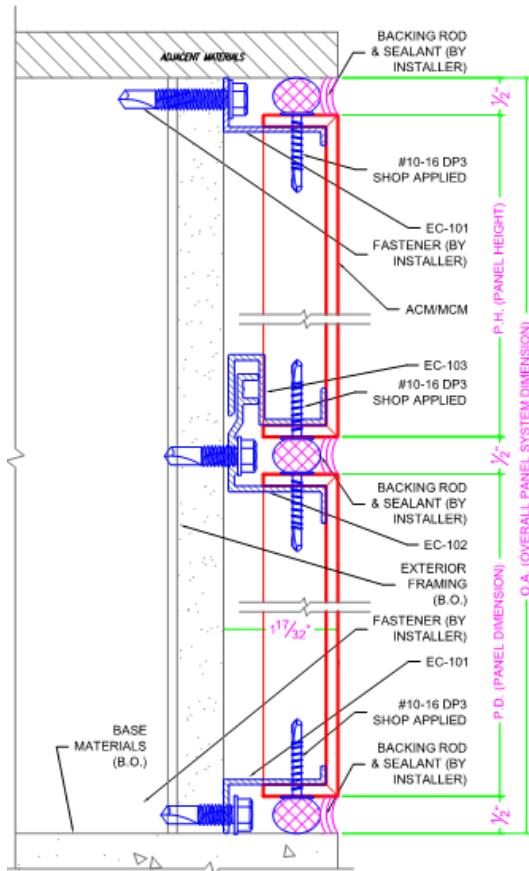
COMPOSITE WALL PANEL



EAST COAST METAL SYSTEMS

EC-100 SYSTEM

The EC-100 Aluminum Composite Panel (ACP) System utilizes panel length, male/female extrusions that are interlocking and easily installed. The EC-100 is a wet-joint system and is sealed with a silicone sealant. The ACP is routed and fabricated into “formed pans” that are attached to the EC-100 extrusions. The EC-100 system can be used on projects varying from the most simple to the most complex. The EC-100’s versatility allows installation over any structurally sound surface. The EC-100 System is available in 4mm, 6mm, 8mm ACM/MCM Panels.





EC-100 SYSTEM

System:	EC-100 (Wet-Joint)
Panel Type:	Composite Wall Panel
Material Options:	4-mm, 6-mm, 8-mm
Core Options:	Polyethylene-PE, Polyethylene-FR, Phenolic-FR
Color:	Available in over 100 standard colors through a variety of ACM Suppliers (Request Color Chart or metal samples) Custom Color available
Finish:	Kynar, PEVE, Woodgrain Anodized, Natural Metals available
Substrate:	Subgirt or Plywood
Standard Panel Surface:	Smooth Custom options available
Max Panel Width:	60" (1524 mm) ¹
Min. Panel Width:	4" (101.6 mm)
Max Panel Length:	194" (4927.6mm)
Min. Panel Length:	4" (101.6 mm)

PERFORMANCE TESTING

<u>Test Method</u>	<u>Title of Test</u>	<u>Results</u>
ASTM E 283	Air Infiltration	Pass ²
ASTM E 331	Water Resistance	No Leakage
ASTM E 330	Uniform Load Deflection	Pass ²
ASTM E 330	Uniform Load Deflection	Pass ²

Note

1. Max panel width subject to change based on vendor material
2. Test Reports available upon request

**Test Date 2/23/09