



# EAST COAST

## METAL SYSTEMS

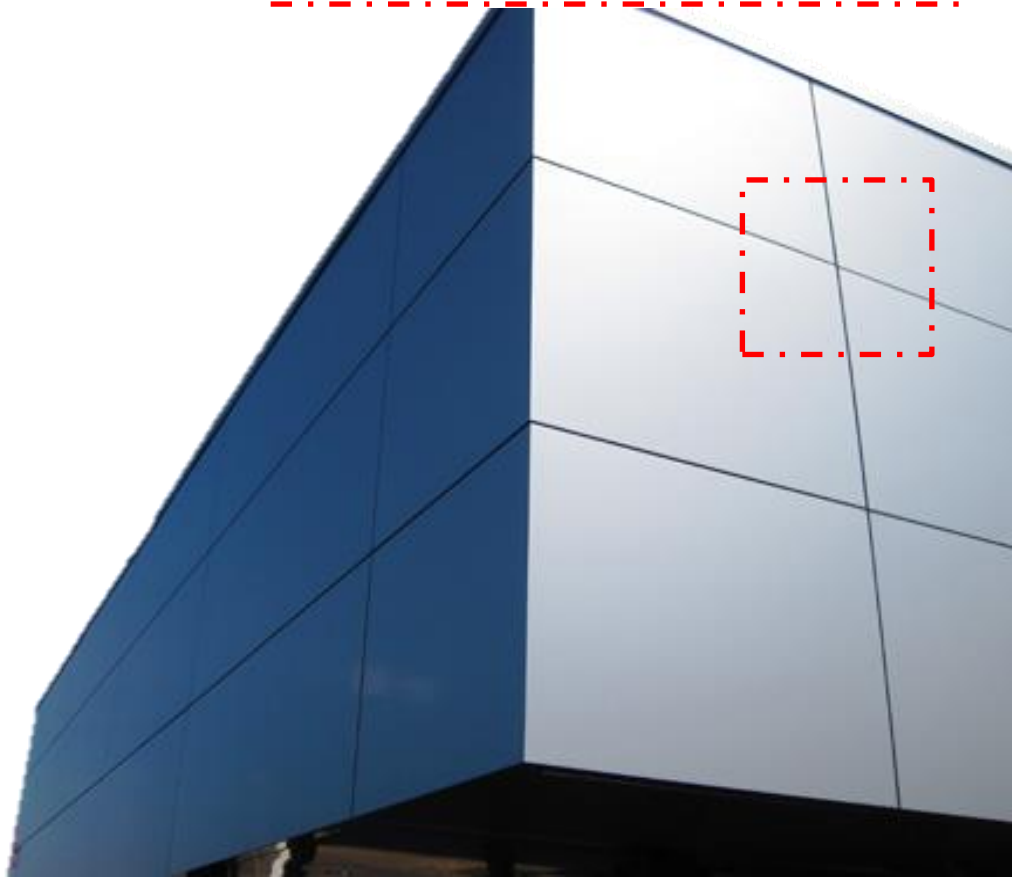
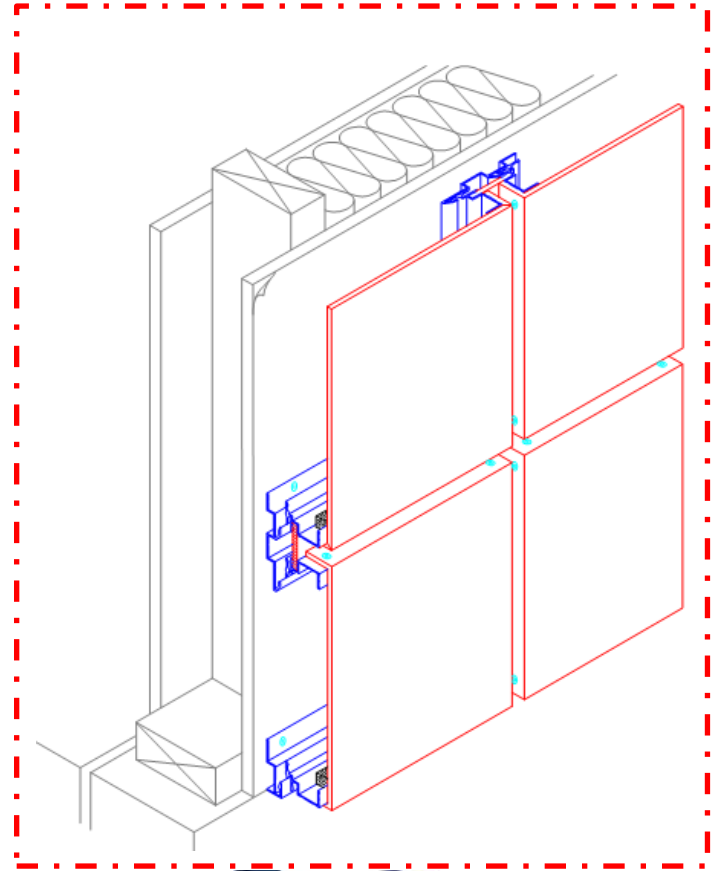
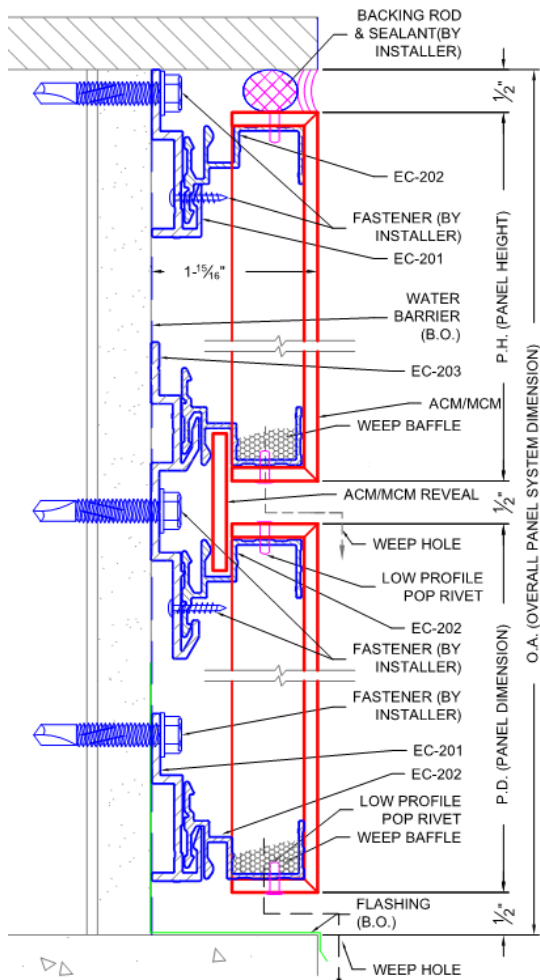
### ***PRODUCT DATA***

ECMS EC-200 SYSTEM

COMPOSITE WALL PANEL

## EC-200 SYSTEM

The Pressure Equalized Rain Screen System is based upon the “rainscreen principle” and allows incidental water to enter the cladding cavity but then be drained via weep holes. Utilizing formed panels, this system is mounted using aluminum extrusions. Panel joints are finished using color matched or complementary accent strips that ‘float’ within the extrusions allowing a reveal from 1/2" to 12". The EC-200 system is compatible with 4mm, 6mm, & 8mm ACM Panels.





## EC-200 SYSTEM

System:	EC-200 (Dry-Joint)
Panel Type:	Composite Wall Panel
Material Options:	4-mm, 6-mm, 8-mm
Core Options:	Polyethylene-PE, Polyethylene-FR, Phenolic-FR
Color:	Available in over 100 standard colors through a variety of ACM Suppliers (Request Color Chart or metal samples) <b>Custom Color available</b>
Finish:	Kynar, PEVE, Woodgrain <b>Anodized, Natural Metals available</b>
Substrate:	Subgirt or Plywood
Standard Panel Surface:	Smooth
Max Panel Width:	60" (1524 mm) <sup>1</sup>
Min. Panel Width:	4" (101.6 mm)
Max Panel Length:	194" (4927.6mm)
Min. Panel Length:	4" (101.6 mm)

### PERFORMANCE TESTING

<u>Test Method</u>	<u>Title of Test</u>	<u>Results</u>
ASTM E 330	Uniform Load Deflection	Pass <sup>3</sup>
ASTM E 330	Uniform Load Deflection	Pass <sup>3</sup>
<u>Test Method</u>	<u>Title of Test</u>	<u>Results</u>
ASTM E 283-04	Air Infiltration	Pass <sup>2,3</sup>
ASTM 1233-06	Pressure Cyclic	Pass <sup>2,3</sup>
ASTM E 331-00	Static Water Penetration	Pass <sup>2,3</sup>
AAMA 501.1-05	Dynamic Water Penetration	Pass <sup>2,3</sup>

#### Note

1. Max panel width subject to change based on vendor material
2. Passes AAMA 508-07
3. Test Repots available upon request

\*\*Test Date 1/30/16